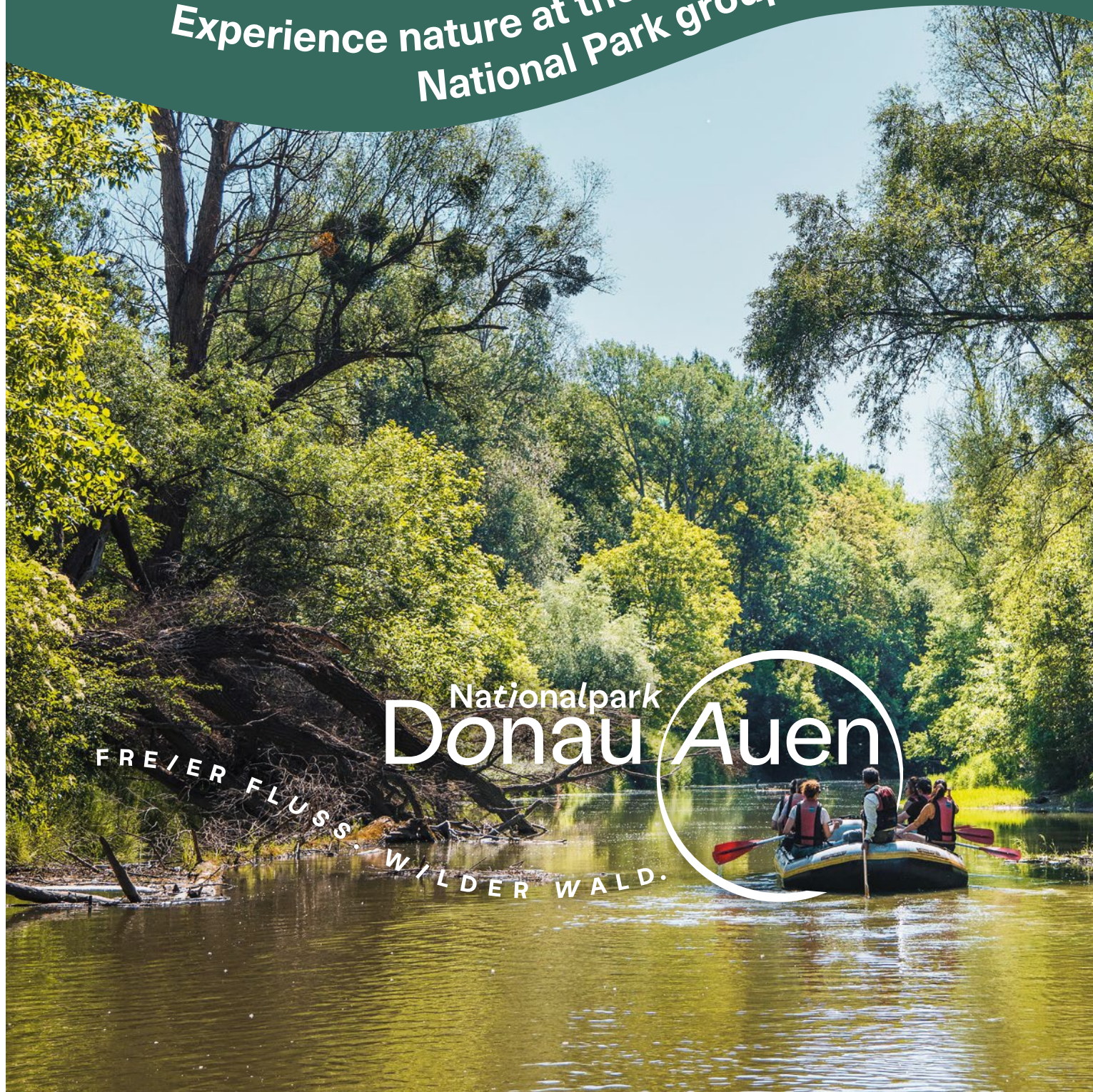


Group programme 2025

Experience nature at the Danube floodplains
National Park group excursions



MIT UNTERSTÜTZUNG DES LANDES NIEDERÖSTERREICH UND DER EUROPÄISCHEN UNION



LE 14-20
Entwicklung für den ländlichen Raum

Europäischer
Landwirtschaftsfonds
für die Entwicklung
des ländlichen Raums:
Hier investiert Europa in
die ländlichen Gebiete



Programmes at the schlossORTH National Park Centre



Guided tour of the Schlossinsel in the schlossORTH National Park Centre

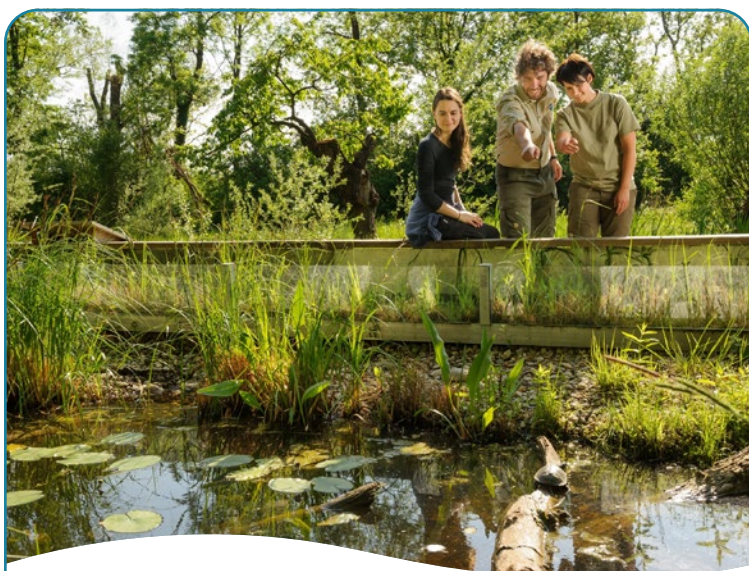
The wetlands experience area of the Schlossinsel will introduce you to the fauna and flora of the National Park region. Learn about the European pond turtle and a number of snake species on a tour with National Park rangers. Visit fish under water – while staying entirely dry yourself. Learn more about the plants growing abundantly in the floodplain forests.

📍 schlossORTH National Park Centre

🕒 approx. 1.5 hours

👥 at least 15 persons

💶 € 11.00 per person



Combined tour at the schlossORTH National Park Centre: guided tour through the National Park exhibitions and a visit to the Schlossinsel

Several multimedia expositions are waiting for you here – the National Park Lounge, DonAUräume exhibition, and changing themes in the observation tower. National Park rangers will accompany you. Subsequently, you can explore the Schlossinsel area with its animal inhabitants.

📍 schlossORTH National Park Centre

🕒 approx. 3 hours

👥 at least 15 persons

💶 € 15.50 per person

Advice: Find further interesting group packages in the unique Marchfeld castles at www.schloesserreich.at.



The Danube floodplains are best explored on board! Our boat tours will frame your nature experience:



Tschaika boat trip and walk through Orth/Danube

The Tschaika is a genuine reproduction of a historical ship that used to sail along the Danube river. Experience the power of the free-flowing river on a leisurely Danube cruise while learning more about the natural landscape of the National Park. Afterwards, you can spend some time walking through the lush riparian forest. National Park rangers will share exciting facts on biodiversity and nature conservation of the region.

📍 Orth/Danube, restaurant Humer's Uferhaus parking lot

🕒 approx. 3 hours

👥 at least 13 persons

💶 € 37.00 per person

Advice: Bread and wine can be served on board of the Tschaika upon request and for an additional fee.



Canoe tour in Stopfenreuth

The Stopfenreuth floodplains are considered the "birthplace" of the Donau-Auen National Park. Active protests here prevented the construction of the Hainburg Danube hydropower station in December 1984. Enjoy a canoe trip on a side branch with National Park rangers. You may spot some European pond turtles, beavers, Kingfishers, as well as Black and Red deer or White-tailed eagles, depending on the season.

Once you have reached the banks of the Danube, you will be able to enjoy a beautiful view of the town of Hainburg. Also keep an eye out for mussels, beaver tracks, or special pebbles. Then it's back in the canoes for the return trip on the same route back to Stopfenreuth.

📍 Stopfenreuth, Uferstraße 1 (at the flood prevention dike)

🕒 approx. 3 hours

👥 at least 9, max. 27 persons

💶 € 279.00 per canoe

📍 Availability depends on water level.



Dinghy tour and walk in Orth/Danube

Explore a side branch of the Danube river together with National Park rangers. Discover evidence of beaver territories and learn more about the tracks of animals living on the riverbanks, where you may even catch a glimpse of Kingfishers, Herons, or Red deer.

The walk will then continue through the floodplain forest. Learn just how alive deadwood really is. Find exciting plant strategies and discover how floods leave their marks on riparian landscapes.

- 📍 Orth/Danube, restaurant Humer's Uferhaus parking lot
- 🕒 approx. 3 hours
- 👥 at least 6 persons
- 💰 € 275.00 per boat (capacity: 10 guests per boat)
- ℹ️ Availability depends on water level.

Dinghy tour from Stopfenreuth to Hainburg

We offer a number of options for exploring the fascinating floodplains, with various offers depending on water level, in the Easternmost part of the National Park, in the Stopfenreuth – Hainburg area. One option is crossing the Stopfenreuther Branch or the Johler Branch with some strong currents along the route. The free-flowing Danube always forms an essential part of these excursions. The National Park rangers will introduce you to the many special features this section of the Danube river has to offer. This tour requires an own bus transport.

- 📍 Stopfenreuth, Uferstraße 1 (at the flood protection dam)
- 🕒 2.5 – 3.5 hours (depending on water level)
- 👥 at least 12, max. 30 persons, minimum age of 8 years, min. 6 adults and max. 4 children per boat
- 💰 € 350.00 per boat (capacity: 10 guests per boat, at least 2 boats)



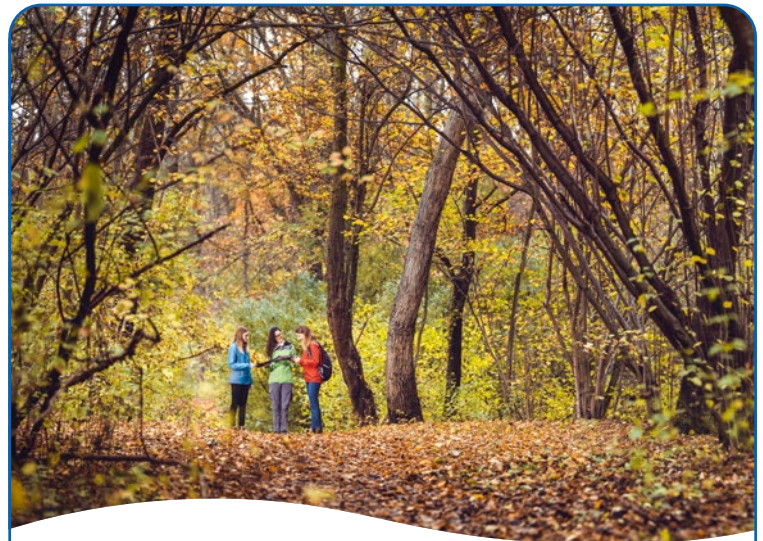
Dinghy tour from Schönau to Orth/Danube

Travelling downstream together – past steep slopes, gravel banks, and riparian islands. Rest on the banks, discover the lush flora and special fauna along the river, and keep an eye out for rare birds. It's a truly unique experience.

National Park rangers will welcome your group in Orth/Danube and accompany you to Schönau by bus. A brief introduction to paddling will be followed by a trip down a side branch. Excitement will grow when the boat paddles into the free-flowing section of the Danube river and starts quickly drifting downstream. The trip will eventually return to the starting point in Orth/Danube.

This tour requires an own bus transport.

- 📍 Orth/Danube, restaurant Humer's Uferhaus parking lot
- 🕒 approx. 3 hours
- 👥 at least 6 persons, minimum age of 8 years, min. 6 adults and max. 4 children per boat
- 💰 € 272.00 per boat (capacity: 10 guests per boat)



“River – Peaks – Floodplain Forest”– combination tour Hainburg

The group will meet up in the Hainburg harbour, where National Park rangers will instruct you in proper paddling.

The trip downstream along the foot of the Rötelstein castle in dinghies will include plenty of information on the National Park and its successful revitalization projects.

The highlight at the mouth of the Morava is the meeting of the mountain river Danube with the lowland river Morava, with a view of the Devin Castle ruins in Slovakia. The hike back to the starting point in Hainburg will take you through lush greenery, passing by the Rötelstein ruins and walking upstream along the banks of the Danube. River, mountain, and floodplain forest: a unique combination.

Starting point can be reached by public transport: Express railway S7, stop: Hainburg/passenger station

- 📍 Hainburg, parking lot at the Donaulände
- 🕒 approx. 4 hours
- 👥 at least 6 persons, minimum age of 8 years, min. 6 adults and max. 4 children per boat
- 💰 € 320.00 per boat (capacity: 10 guests per boat)

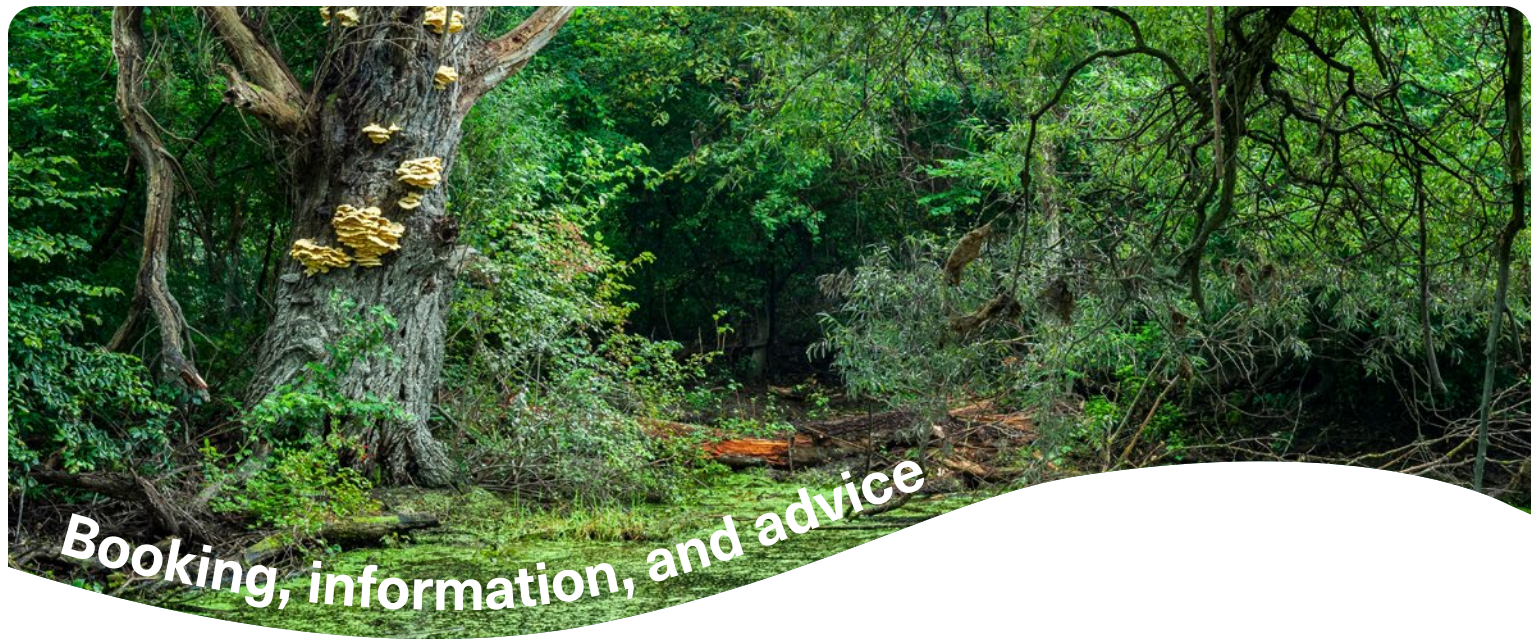
Your personal ranger



Themed walks in the Lower Austria part of the National Park

You can also experience the dynamics of the floodplain landscape and the power of the river from the bank. A vast variety of themes covering anything from habitats to ecology or animal and plant species will turn every hike into an educational experience. Choose the date, meeting point, and, if desired, the focus theme for your National Park hike.

- 📍 Meeting point by arrangement
- 🕒 3 to 3.5 hours
- 💰 flat-rate € 210.00 (for up to 20 persons)



Booking, information, and advice

The river landscape between Vienna and Bratislava has been subject to special protection as the Donau-Auen National Park since 1996. The Danube forms a varied mosaic of habitats that offers a home to a plethora of flora and fauna that we will explore with you. Visit pristine floodplain forests, meadows, the free-flowing river, and enchanted side branches. Learn fascinating background information and discover places of great beauty along the way. Our National Park rangers will accompany you. We are looking forward to your visit.

For programmes in the Lower Austria part of the National Park:

schlossORTH National Park Centre

Schlossplatz 1, 2304 Orth/Danube, Austria
21 March to 30 September: daily, 9 AM – 6 PM
1 October to 1 November: daily, 9 AM – 5 PM
2 November to 20 March: Winter break,
Call us Mon to Fri, 9 AM – 1 PM
schlossorth@donauauen.at, www.donauauen.at

National Park information point Schloss Eckartsau

Schloss Eckartsau, 2305 Eckartsau, Austria
1 April to 1 November:
Mon to Fri, 10 AM – 5 PM; Sat, Sun, holidays 10 AM – 6 PM
2 November to 31 March: Winter break,
Call us Mon to Fri, 10 AM – 4 PM
infostelle.donauauen@bundesforste.at
www.schlosseckartsau.at

For programmes in the Viennese part of the National Park:

National Park House wien-lobAU

Dechantweg 8, 1220 Vienna, Austria
Beginning of March to end of October:
Wed to Sun, 10 AM – 6 PM
nh@ma49.wien.gv.at, www.nph-lobau.wien.at

The prices apply from 1 January 2025 onwards; all quoted prices include VAT.

Tour guides and bus drivers may visit the schlossORTH National Park Centre for free. Bus parking is available nearby.

We will gladly tell you about the special terms for tour operators. Please book your tour no later than 7 days before the desired date. Tours are available in German, English or Slovakian; other languages can be organised upon request.

Our programmes are aligned with letting you spend the entire day in the Donau-Auen National Park. We will gladly advise you on what offers can be combined.

Accessibility: schlossORTH National Park Centre is wheelchair-accessible. The Schlossinsel area has special information elements for blind and visually impaired guests.

Please note that the Shipping Law allows exclusion of people who are under the influence of alcohol or who otherwise appear mentally or physically unsuitable for participating in our boat tours. For details, see our GTC.

Dogs must not be taken along on boat trips. The schlossORTH National Park Centre does not allow dogs either.

If a booked tour cannot be held as planned, e.g., due to flooding events, poor weather conditions, storm, or exceptionally high mosquito occurrence, we will strive to offer interesting alternatives. Liability for injury and property damage cannot be taken.



You can also find all group offers online

www.donauauen.at

[f donauauen](#) [@ np_donau_auen](#) [@donauauen](#)



Bundesministerium
Klimaschutz, Umwelt,
Energie, Mobilität,
Innovation und Technologie

